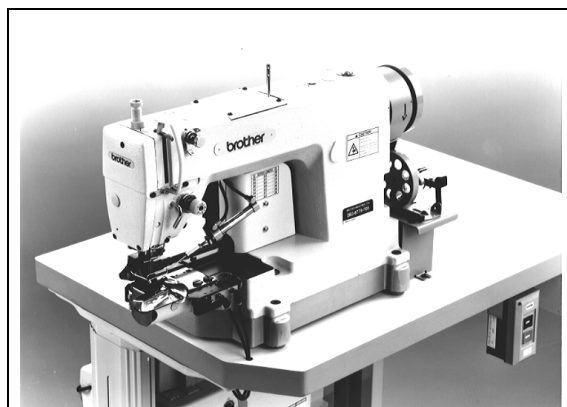


SC-7750

SC-7760

Single Needle Cylinder Bed Needle Feed
Lock Stitcher

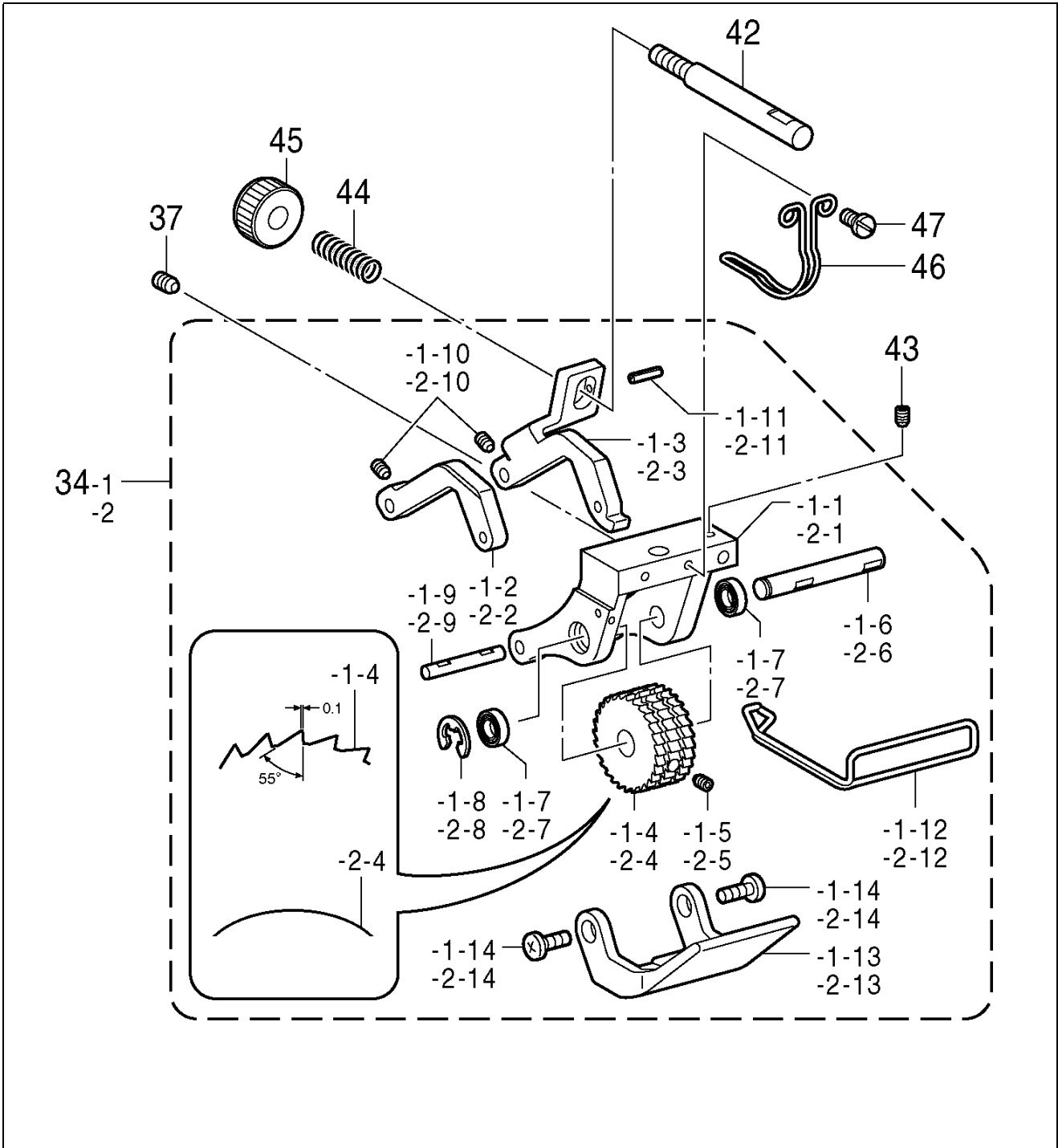
Single Needle Cylinder Bed Needle Feed
Lock Stitcher with Thread Trimmer



Specifications

| | SC-7750 | SC-7760 |
|--------------------------------|--|---|
| Application | Hem bottom for jeans (Heavy materials) | |
| Max. sewing speed | 5,000 rpm | |
| Stitch length | 2 - 4.2 mm | |
| Needle bar stroke | 33 mm | |
| Height of presser foot | 14 mm | |
| Needle | 1955 - 01MR5 | |
| Hook | × 1.7 Rotary hook | |
| Cylinder circumference | 180 mm | |
| Hem size | 12.7 mm (1 / 2") | |
| Power source | - | Single phase 110 V, 220 V, 230 V, 240 V 3-phase 220 V, 380 V, 400 V, 415 V |
| Air pressure · Air consumption | - | 0.49 Mpa (5 kgf / c m ²) · 0.5 l / min |
| Production capacity | 1,000 - 1,200 pieces/day (2,000 - 2,400 seams) | |

Presser foot mechanism



Presser foot mechanism

<For thin materials>

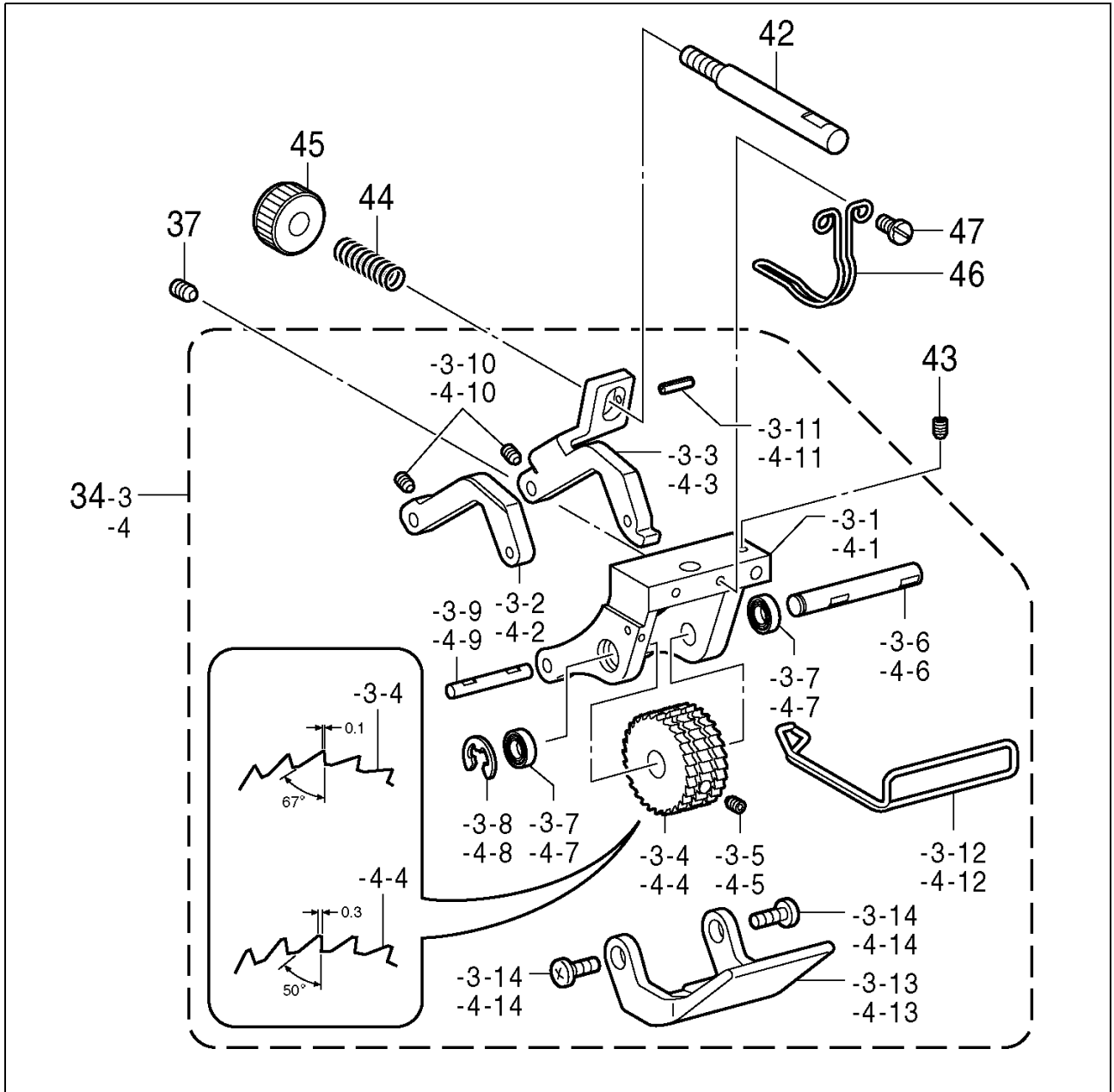
<Gear type>

| Ref. No. | Part name | Part code | Q'ty |
|----------|-------------------------------|------------|------|
| 34-1 | Presser foot assy, 12.7 | S47629-101 | 1 |
| 34-1-1 | Presser bracket | S44040-001 | 1 |
| 34-1-2 | Presser foot, UL | S51239-001 | 1 |
| 34-1-3 | Presser foot, UR | S51240-001 | 1 |
| 34-1-4 | Roller, 28 | S47639-001 | 1 |
| 34-1-5 | Set screw, socket (CP) SM4.37 | 014680-622 | 2 |
| 34-1-6 | Roller shaft | S44044-001 | 1 |
| 34-1-7 | Ball bearing | S44045-000 | 2 |
| 34-1-8 | Retaining ring, E5 | 048050-342 | 1 |
| 34-1-9 | Presser foot shaft | S44046-001 | 1 |
| 34-1-10 | Set screw, socket (CP) M3x5 | 014300-532 | 2 |
| 34-1-11 | Pin, spring roll AW2 | 047201-042 | 1 |
| 34-1-12 | Finger guard | S44047-000 | 1 |
| 34-1-13 | Presser foot, D 12.7 | S44048-001 | 1 |
| 34-1-14 | Screw, bind SM3.18 - 40 x 6 | 060660-612 | 2 |
| 37 | Set screw, socket SM5.95 | 014760-622 | 1 |
| 42 | Shaft | S44050-001 | 1 |
| 43 | Set screw, socket (CP) SM4.37 | 014680-422 | 1 |
| 44 | Spring | S44051-001 | 1 |
| 45 | Tension nut | 155510-001 | 1 |
| 46 | Roller cover | S44052-001 | 1 |
| 47 | Screw, SM 3.57 x 6 | 100257-010 | 2 |

<Rubber roller type >

| Ref. No. | Part name | Part code | Q'ty |
|----------|-------------------------------|------------|------|
| 34-2 | Presser foot assy, 12.7 | S47630-101 | 1 |
| 34-2-1 | Presser bracket | S44040-001 | 1 |
| 34-2-2 | Presser foot, UL | S51239-001 | 1 |
| 34-2-3 | Presser foot, UR | S51240-001 | 1 |
| 34-2-4 | Rubber roller, 28 | S47635-001 | 1 |
| 34-2-5 | Set screw, socket (CP) SM4.37 | 014680-622 | 2 |
| 34-2-6 | Roller shaft | S44044-001 | 1 |
| 34-2-7 | Ball bearing | S44045-000 | 2 |
| 34-2-8 | Retaining ring, E5 | 048050-342 | 1 |
| 34-2-9 | Presser foot shaft | S44046-001 | 1 |
| 34-2-10 | Set screw, socket (CP) M3x5 | 014300-532 | 2 |
| 34-2-11 | Pin, spring roll AW2 | 047201-042 | 1 |
| 34-2-12 | Finger guard | S44047-000 | 1 |
| 34-2-13 | Presser foot, D 12.7 | S44048-001 | 1 |
| 34-2-14 | Screw, bind SM3.18 - 40 x 6 | 060660-612 | 2 |
| 37 | Set screw, socket SM5.95 | 014760-622 | 1 |
| 42 | Shaft | S44050-001 | 1 |
| 43 | Set screw, socket (CP) SM4.37 | 014680-422 | 1 |
| 44 | Spring | S44051-001 | 1 |
| 45 | Tension nut | 155510-001 | 1 |

Presser foot mechanism



Presser foot mechanism

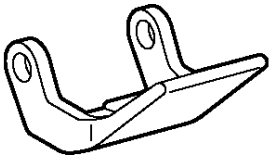
<For medium materials>

| Ref. No. | Part name | Part code | Q'ty |
|----------|-------------------------------|------------|------|
| 34-3 | Presser foot assy, 12.7 | S46429-101 | 1 |
| 34-3-1 | Presser bracket | S44040-001 | 1 |
| 34-3-2 | Presser foot, UL | S51239-001 | 1 |
| 34-3-3 | Presser foot, UR | S51240-001 | 1 |
| 34-3-4 | Roller, 28 | S44043-001 | 1 |
| 34-3-5 | Set screw, socket (CP) SM4.37 | 014680-622 | 2 |
| 34-3-6 | Roller shaft | S44044-001 | 1 |
| 34-3-7 | Ball bearing | S44045-000 | 2 |
| 34-3-8 | Retaining ring, E5 | 048050-342 | 1 |
| 34-3-9 | Presser foot shaft | S44046-001 | 1 |
| 34-3-10 | Set screw, socket (CP) M3×5 | 014300-532 | 2 |
| 34-3-11 | Pin, spring roll AW2 | 047201-042 | 1 |
| 34-3-12 | Finger guard | S44047-000 | 1 |
| 34-3-13 | Presser foot, D12.7 | S44048-001 | 1 |
| 34-3-14 | Screw, bind SM3.18-40×6 | 060660-612 | 2 |
| 37 | Set screw, socket SM5.95 | 014760-622 | 1 |
| 42 | Shaft | S44050-001 | 1 |
| 43 | Set screw, socket (CP) SM4.37 | 014680-422 | 1 |
| 44 | Spring | S44051-001 | 1 |
| 45 | Tension nut | 155510-001 | 1 |
| 46 | Roller cover | S44052-001 | 1 |
| 47 | Screw, SM 3.57 × 6 | 100257-010 | 2 |

<For heavy materials>

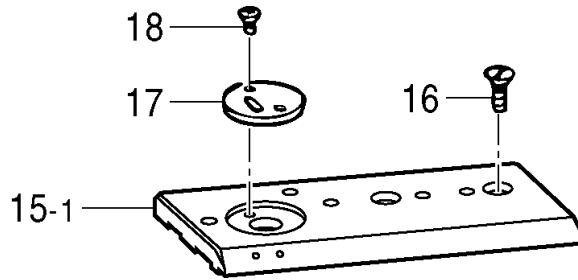
| Ref. No. | Part name | Part code | Q'ty |
|----------|-------------------------------|------------|------|
| 34-4 | Presser foot assy, 12.7 | S46766-101 | 1 |
| 34-4-1 | Presser bracket | S44040-001 | 1 |
| 34-4-2 | Presser foot, UL | S51239-001 | 1 |
| 34-4-3 | Presser foot, UR | S51240-001 | 1 |
| 34-4-4 | Roller, 28 | S46767-001 | 1 |
| 34-4-5 | Set screw, socket (CP) SM4.37 | 014680-622 | 2 |
| 34-4-6 | Roller shaft | S44044-001 | 1 |
| 34-4-7 | Ball bearing | S44045-000 | 2 |
| 34-4-8 | Retaining ring, E5 | 048050-342 | 1 |
| 34-4-9 | Presser foot shaft | S44046-001 | 1 |
| 34-4-10 | Set screw, socket (CP) M3×5 | 014300-532 | 2 |
| 34-4-11 | Pin, spring roll AW2 | 047201-042 | 1 |
| 34-4-12 | Finger guard | S44047-000 | 1 |
| 34-4-13 | Presser foot, D 12.7 | S44048-001 | 1 |
| 34-4-14 | Screw, bind SM3.18 - 40 × 6 | 060660-612 | 2 |
| 37 | Set screw, socket SM5.95 | 014760-622 | 1 |
| 42 | Shaft | S44050-001 | 1 |
| 43 | Set screw, socket (CP) SM4.37 | 014680-422 | 1 |
| 44 | Spring | S44051-001 | 1 |
| 45 | Tension nut | 155510-001 | 1 |
| 46 | Roller cover | S44052-001 | 1 |
| 47 | Screw, SM 3.57 × 6 | 100257-010 | 2 |

Presser foot mechanism

|  | | | |
|---|------------|------|--|
| Part name | Part code | Q'ty | |
| Presser foot, D9.5 | S44049-001 | 1 | |

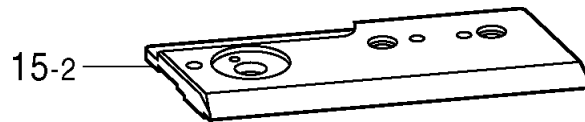
Needle plate

<For SC-7760>



| Ref. No. | Part name | Part code | Q'ty |
|----------|-----------------------|------------|------|
| 15-1 | Needle plate | S44018-001 | 1 |
| 16 | Screw, flat SM4.37 | 100032-004 | 2 |
| 17 | Needle hole plate | S44019-001 | 1 |
| 18 | Screw, flat SM2.38 | 100360-003 | 2 |
| | <For thin materials > | | |
| 17 | Needle hole plate | S47634-001 | 1 |

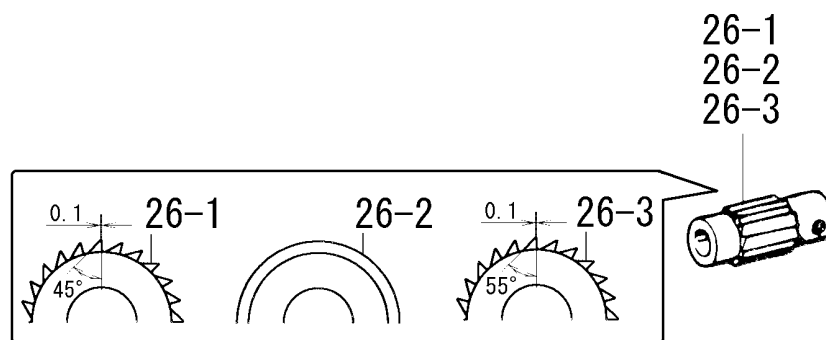
<For SC-7750>



| Ref. No. | Part name | Part code | Q'ty |
|----------|--------------|------------|------|
| 15-2 | Needle plate | S46310-001 | 1 |

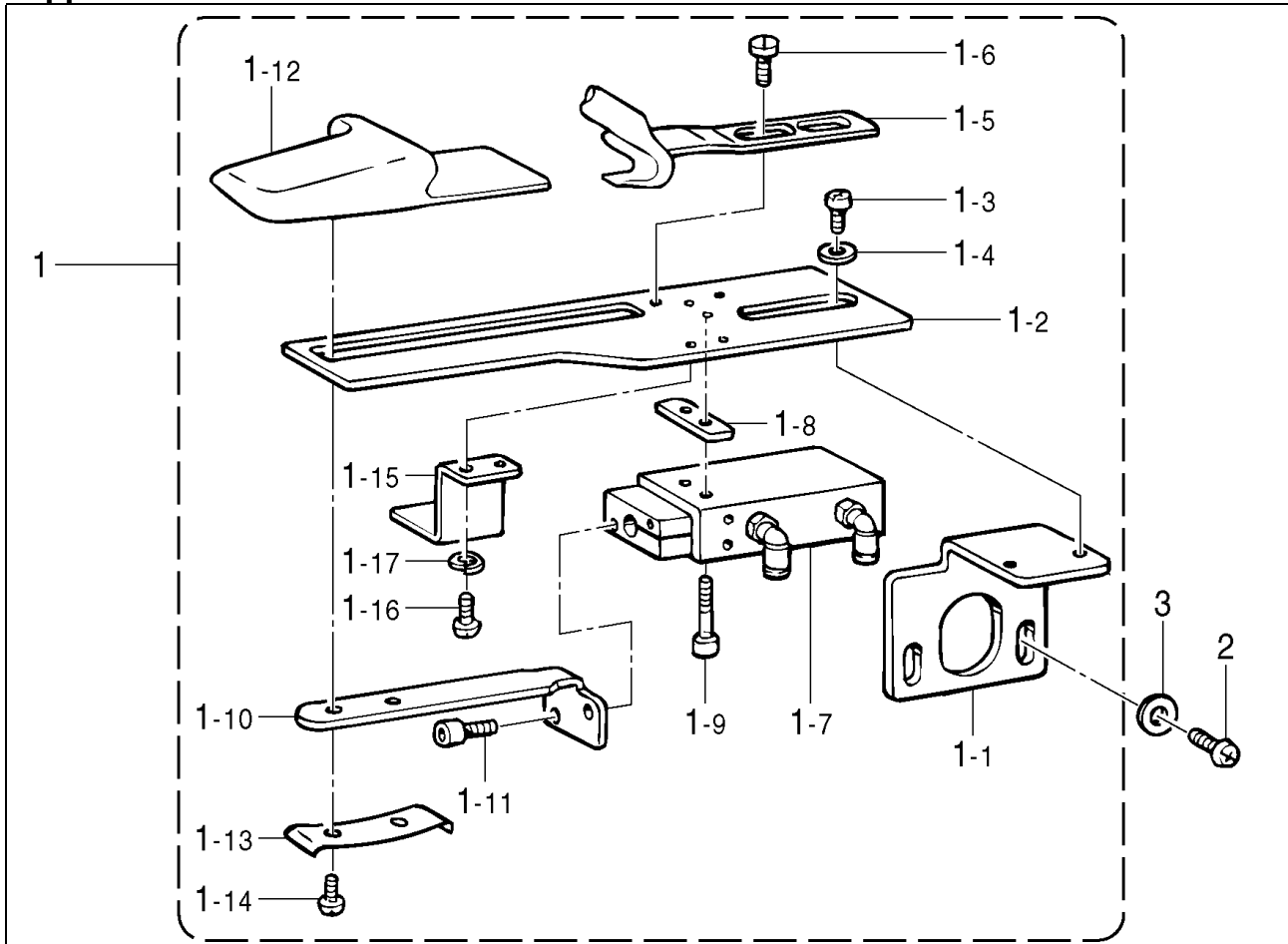
*Screw, flat SM4.37, needle hole plate, and screw, flat SM2.38 are used for both SC-7750 & SC-7760.

Feed roller



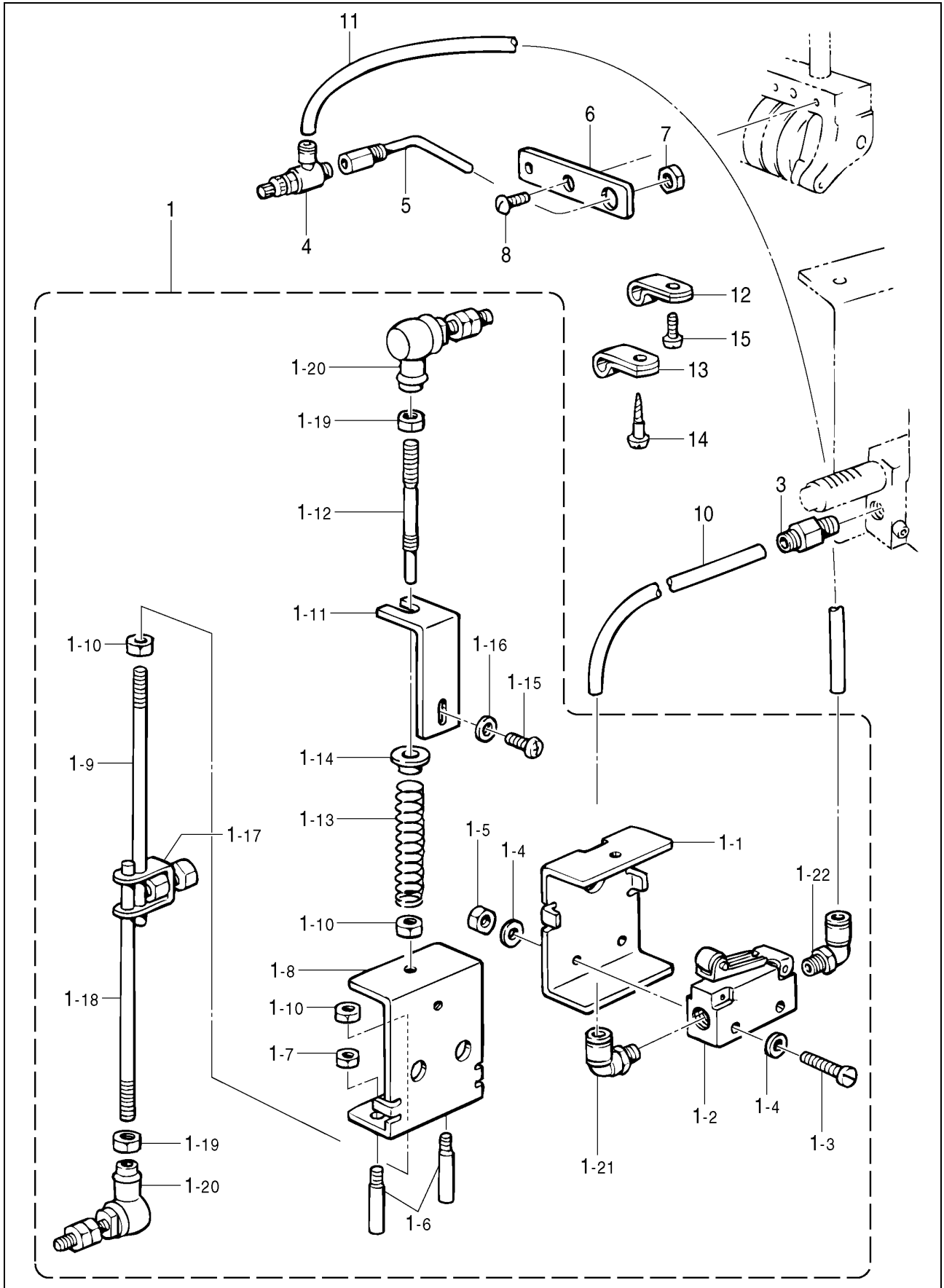
| Ref. No. | Part name | Part code | Q'ty |
|----------|---------------------------------------|------------|------|
| | For thin materials | | |
| | <Gear type > | | |
| 26-1 | Roller, 14 | S47640-001 | 1 |
| | <Rubber roller type > | | |
| 26-2 | Rubber roller, 14 | S47636-001 | 1 |
| | For medium and heavy materials | | |
| 26-3 | Roller, 14 | S44088-001 | 1 |

Lapper mechanism



| Ref. No. | Part name | Part code | Q'ty |
|-------------------------------------|-------------------------------|------------|------|
| <For heavy materials> | | | |
| 1 | Lap seam folder assy | S44095-001 | 1 |
| 1-1 | Lap seam folder support plate | S44096-001 | 1 |
| 1-2 | Lap seam folder setting plate | S44097-001 | 1 |
| 1-3 | Screw, pan SM4.37 - 40 x 8 | 062680-812 | 2 |
| 1-4 | Washer, plain 5 | 146354-001 | 2 |
| 1-5 | Lap seam folder, R | S44098-000 | 1 |
| 1-6 | Screw, SM4.37 | 115503-001 | 2 |
| 1-7 | Cylinder assy | S44099-000 | 1 |
| 1-8 | Spacer | S44101-001 | 1 |
| 1-9 | Bolt, socket M3 x 16 | 018301-636 | 2 |
| 1-10 | Guide plate, folder (L) | S44102-001 | 1 |
| 1-11 | Bolt, socket M3 x 10 | 018301-036 | 2 |
| 1-12 | Lap seam folder, L | S44103-000 | 1 |
| 1-13 | Presser plate | S44104-001 | 1 |
| 1-14 | Screw, pan M3 x 8 | 062300-816 | 2 |
| 1-15 | Cover | S44105-001 | 1 |
| 1-16 | Screw, pan M3 x 4 | 062300-416 | 2 |
| 1-17 | Washer, spring 2 - 3 | 028030-242 | 2 |
| 2 | Screw, pan SM5.95 - 28 x 12 | 062761-212 | 2 |
| 3 | Washer, plain M6 | 025060-232 | 2 |
| <For medium materials> | | | |
| 1 | Lap seam folder assy, M | S47631-001 | 1 |
| 1-5 | Lap seam folder, RM | S47632-000 | 1 |
| 1-12 | Lap seam folder, LM | S47633-000 | 1 |

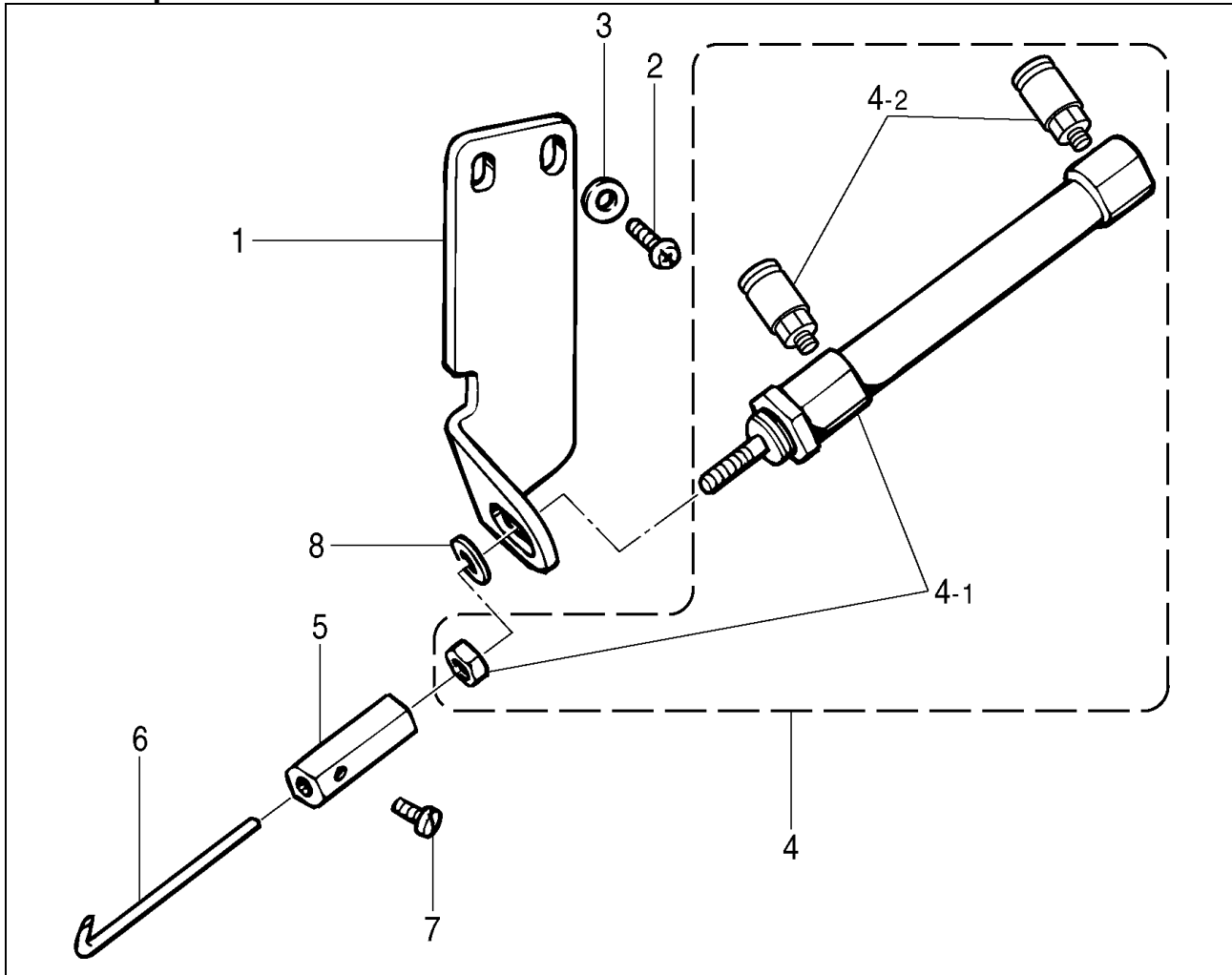
Needle cooler



Needle cooler

| Ref. No. | Part name | Part code | Q'ty |
|----------|-----------------------------|------------|------|
| 1 | Connecting rod assy | S44154-001 | 1 |
| 1-1 | Valve setting plate | S21356-001 | 1 |
| 1-2 | Micro valve | S01561-000 | 1 |
| 1-3 | Screw, flat M4 × 25 | 007402-516 | 2 |
| 1-4 | Washer, plain M4 | 025040-236 | 4 |
| 1-5 | Nut, 1M4 | 021400-106 | 2 |
| 1-6 | Pin | S21357-001 | 2 |
| 1-7 | Nut, 2M4 | 021400-206 | 4 |
| 1-8 | Valve differential plate | S21358-001 | 1 |
| 1-9 | Connecting rod, inner | S44155-001 | 1 |
| 1-10 | Nut, 3M6 | 021060-306 | 3 |
| 1-11 | Adjusting plate, spring | S21359-001 | 1 |
| 1-12 | Connecting rod, U | S21360-001 | 1 |
| 1-13 | Spring, A | S21361-001 | 1 |
| 1-14 | Spring holder | S21362-000 | 1 |
| 1-15 | Screw, bind M4 × 6 | 060400-616 | 1 |
| 1-16 | Washer, plain M4 | 025040-236 | 1 |
| 1-17 | Connecting rod clamp assy | 181225-001 | 1 |
| 1-18 | Connecting rod, inner | S44155-001 | 1 |
| 1-19 | Nut, 3M6 | 021060-306 | 2 |
| 1-20 | Joint assy | 119712-001 | 2 |
| 1-21 | Elbow union, 61 | S01542-000 | 1 |
| 1-22 | Elbow union | S04909-000 | 1 |
| 3 | Half union | S01522-000 | 1 |
| 4 | Speed controller | S23660-000 | 1 |
| 5 | Air blow assy | S44156-001 | 1 |
| 6 | Air blow setting plate | S44159-001 | 1 |
| 7 | Nut, 1M5 | 021500-106 | 1 |
| 8 | Screw, bind SM3.57 – 40 × 6 | 060670-612 | 1 |
| 10 | Air tube, 6L = 900 | S28686-000 | 1 |
| 11 | Air tube, L = 1170 | S36655-001 | 1 |
| 12 | Cord holder, 6N | 525664-000 | 1 |
| 13 | Cord holder, 5N | S00480-000 | 1 |
| 14 | Wood screw, round M3.1 × 13 | 031311-302 | 1 |
| 15 | Screw, pan SM3.57 – 40 × 6 | 062670-612 | 1 |

Thread wiper mechanism



| Ref. No. | Part name | Part code | Q'ty |
|----------|-----------------------------|------------|------|
| 1 | Setting bracket, cylinder | S44139-001 | 1 |
| 2 | Screw, pan SM4.37 - 40 x 10 | 062681-012 | 2 |
| 3 | Washer, plain S4.37 | 025680-132 | 2 |
| 4 | Cylinder assy, 10 x 30 | S41581-000 | 1 |
| 4-1 | Cylinder 10 x 30 | S41582-000 | 1 |
| 4-2 | Tube elbow, M - 5HL - 4 | S12150-000 | 2 |
| 5 | Thread wiper arm | S44140-001 | 1 |
| 6 | Thread wiper | S44141-001 | 1 |
| 7 | Set screw, SM3.18 | 140553-102 | 1 |
| 8 | Washer, plain S10 | 025100-132 | 1 |